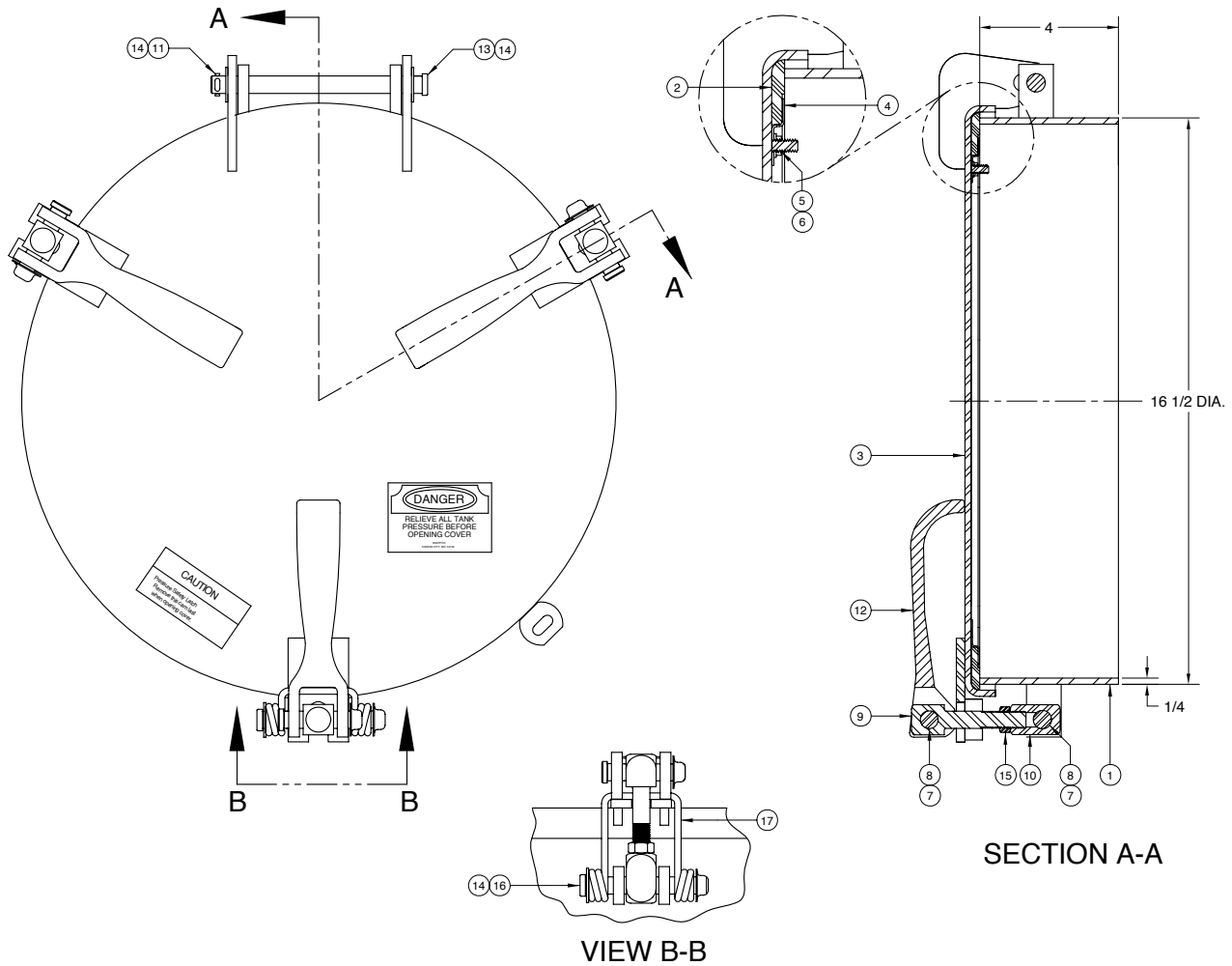




AN OPW® FLUID TRANSFER GROUP COMPANY

# LF2210 16" Manhole Assembly



ITEM	PART NUMBER	DESCRIPTION	QTY.
1	5035	WELD RING ASSY (S.S.)	1
2	4934	GASKET (BUNA)	1
3	5074	COVER WELDMENT (S.S.)	1
4	1901	GASKET RETAINER (S.S.)	1
5	1088	HEX NUT (S.S.)	6
6	1330	WASHER (S.S.)	6
7	1048	SAFETY CATCH (PLATED)	1
8	3952	CLEVIS PIN (PLATED) <sup>1</sup>	5
9	1011	STUD (PLATED) <sup>1</sup>	3
10	1012	CONNECTOR (PLATED) <sup>1</sup>	3
11	1045	COTTER PIN (PLATED) <sup>1</sup>	9
12	1041	CAM LEVER (PLATED) <sup>1</sup>	3
13	1042	CLEVIS PIN (PLATED)	1

ITEM	PART NUMBER	DESCRIPTION	QTY.
14	1043	WASHER (PLATED)	3
15	1016	JAM NUT (PLATED) <sup>1</sup>	3
16	1046	CLEVIS PIN (PLATED)	1

### ALTERNATE SEALING MEDIA / CAM ASSEMBLIES

PART NUMBER	DESCRIPTION
5354	GASKET (WHITE NEOPRENE)
5648	GASKET (EPDM)
5221	GASKET (SILICONE)
2567	GASKET (TEFLON ENVELOPE)
5875	GASKET (HIGH TEMP)
1838	CAM ASSEMBLY KIT (S.S.)
1837	CAM ASSEMBLY (PLATED)

1 - Included in 1837



PHONE: (816) 741-6600 • (888) 526-5657 • Fax: (816) 741-1061  
 4304 Mattox Road • Kansas City, MO 64150 • [www.knapco.com](http://www.knapco.com)