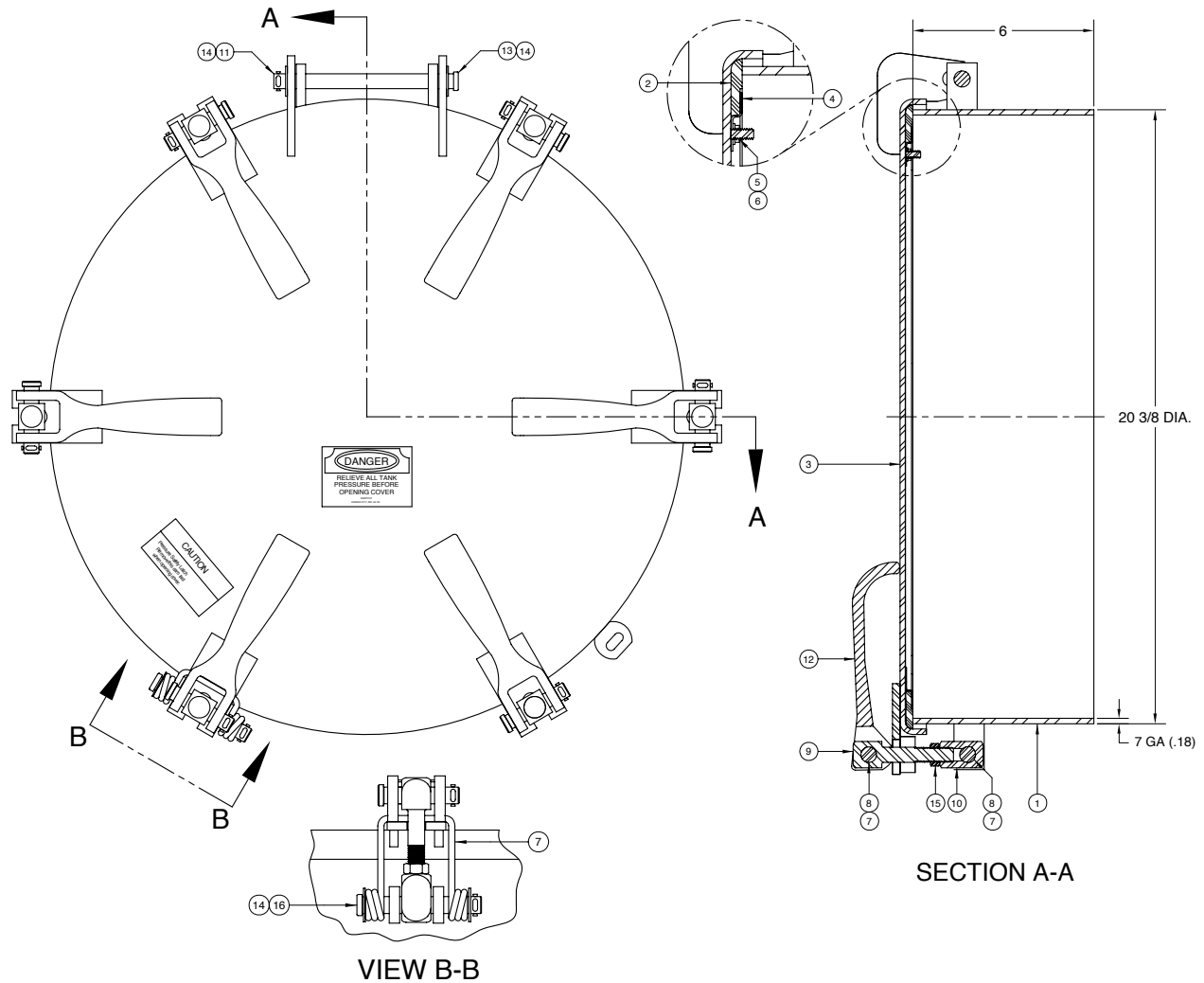




AN OPW® FLUID TRANSFER GROUP COMPANY

# KS4210 20" Manhole Assembly



ITEM	PART NUMBER	DESCRIPTION	QTY.
1	2102	WELD RING ASSY (S.S.)	1
2	1026	GASKET (BUNA)	1
3	3218	COVER WELDMENT (S.S.)	1
4	2477	GASKET RETAINER (S.S.)	1
5	1088	HEX NUT (S.S.)	6
6	1330	WASHER (S.S.)	6
7	1085	SAFETY CATCH (S.S.)	1
8	1438	CLEVIS PIN (S.S.) <sup>1</sup>	7
9	1077	STUD (S.S.) <sup>1</sup>	6
10	1078	CONNECTOR (S.S.) <sup>1</sup>	6
11	1083	COTTER PIN (S.S.) <sup>1</sup>	13
12	1079	CAM LEVER (S.S.) <sup>1</sup>	4
13	1080	CLEVIS PIN (S.S.)	1

ITEM	PART NUMBER	DESCRIPTION	QTY.
14	2618	WASHER (S.S.)	4
15	1082	JAM NUT (S.S.) <sup>1</sup>	6
16	1084	CLEVIS PIN (S.S.)	1

### ALTERNATE SEALING MEDIA / CAM ASSEMBLIES

PART NUMBER	DESCRIPTION
1432	GASKET (WHITE NEOPRENE)
3622	GASKET (EPDM)
2573	GASKET (VITON)
2726	GASKET (HIGH TEMP)
1838	CAM ASSEMBLY KIT (S.S.)
1837	CAM ASSEMBLY (PLATED)

1 - Included in 1838



PHONE: (816) 741-6600 • (888) 526-5657 • Fax: (816) 741-1061  
 4304 Mattox Road • Kansas City, MO 64150 • [www.knappco.com](http://www.knappco.com)