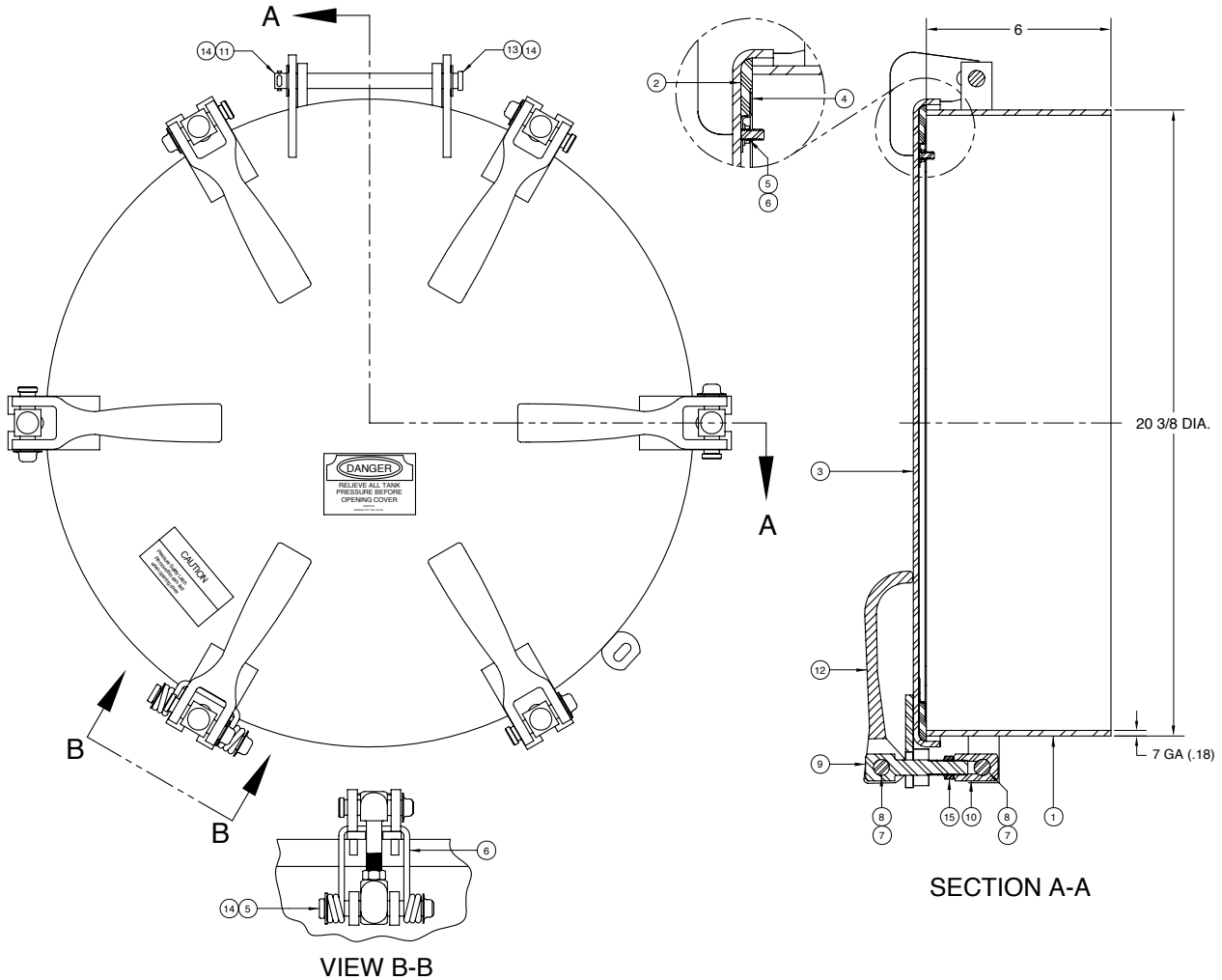




AN OPW[®] FLUID TRANSFER GROUP COMPANY

KS1110 20" Manhole Assembly



ITEM	PART NUMBER	DESCRIPTION	QTY.
1	2088	WELD RING ASSY (STEEL)	1
2	1026	GASKET (BUNA)	1
3	3217	COVER WELDMENT (STEEL)	1
4	1027	GASKET RETAINER (STEEL)	1
5	1059	HEX NUT (PLATED)	6
6	1036	WASHER (PLATED)	6
7	1020	PAL NUT (PLATED) ¹	12
8	3952	CLEVIS PIN (PLATED) ¹	11
9	1011	STUD (PLATED) ¹	6
10	1012	CONNECTOR (PLATED) ¹	6
11	1045	COTTER PIN (PLATED)	1
12	1013	CAM LEVER (STEEL) ¹	6
13	1042	CLEVIS PIN (PLATED)	1
14	1043	WASHER (PLATED)	3

ITEM	PART NUMBER	DESCRIPTION	QTY.
15	1016	JAM NUT (PLATED) ¹	6
16	1046	CLEVIS PIN (PLATED)	1
17	1019	SAFETY CATCH (STEEL)	1

ALTERNATE SEALING MEDIA / CAM ASSEMBLIES

PART NUMBER	DESCRIPTION
1432	GASKET (WHITE NEOPRENE)
3622	GASKET (EPDM)
2573	GASKET (VITON)
2726	GASKET (HIGH TEMP)
1836	CAM ASSEMBLY KIT (STEEL)
1837	CAM ASSEMBLY (PLATED)

1 - Included in 1836



PHONE: (816) 741-6600 • (888) 526-5657 • Fax: (816) 741-1061
 4304 Mattox Road • Kansas City, MO 64150 • www.knappco.com